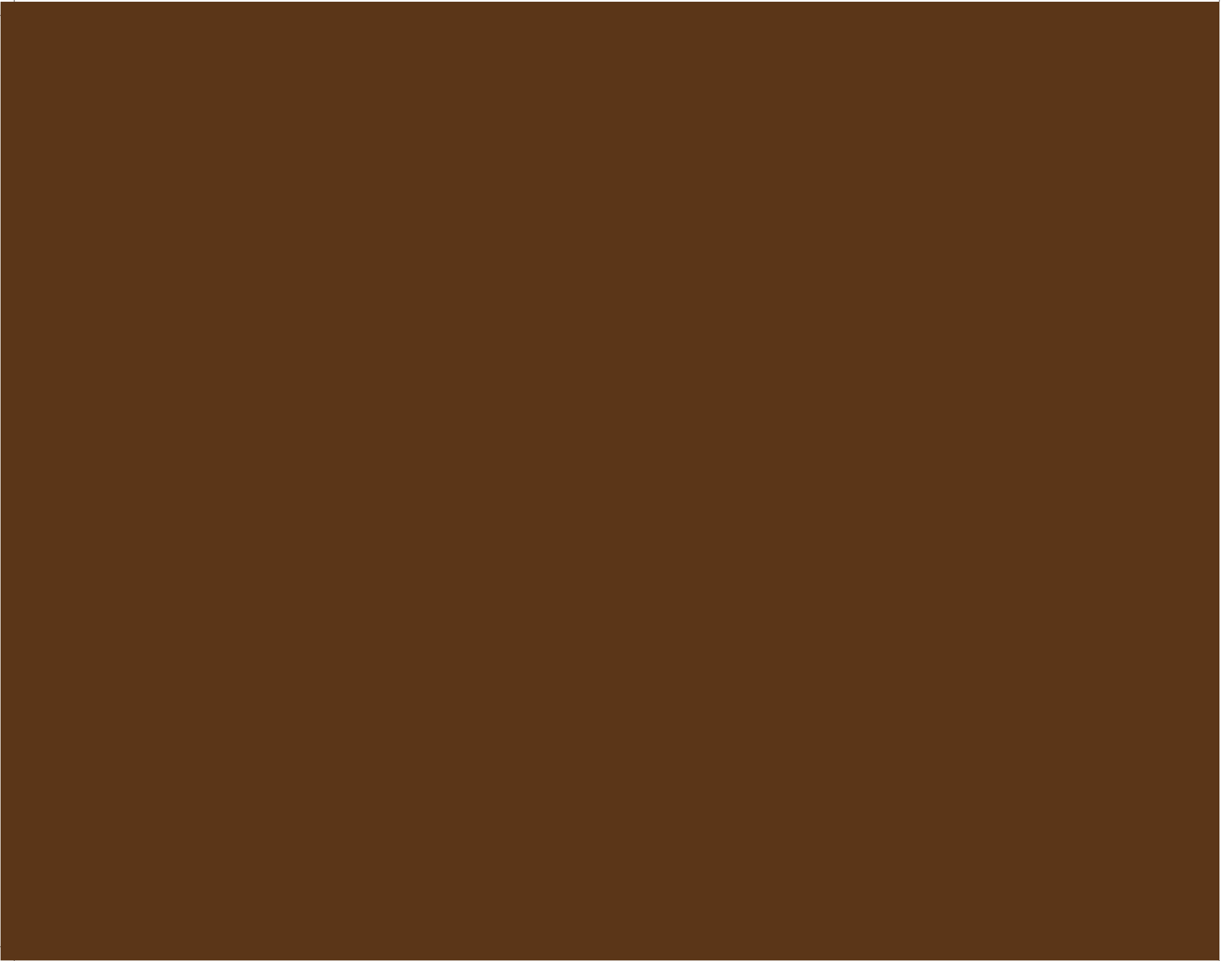




FAIRWAY SPRINGS
SKI & GOLF VILLAS



Vellum Sheet

Vellum Sheet



FAIRWAY SPRINGS
SKI & GOLF VILLAS

Site Map

Located on a private drive ending in a quiet cul-de-sac, Fairway Springs is tucked between two rolling fairways in the summer, and just below the ski slopes in the winter. From here, you're a mere minute's drive to the heart of The Canyons® Resort, and just a short walk from the new Frostwood Gondola.

Each townhome has been carefully placed and designed to take full advantage of privacy and views.





"The Canyons® Resort" and its related names, trade names, marks and logos are owned by The Canyons and its affiliated entities. Their use herein is solely for geographical reference purposes. The Frostwood lift and the golf course are being designed and built by others; Developer has no control over the design or construction of such facilities. Floor plans, site plans, elevations, furnishings, finishes, materials and other design specifications are preliminary and subject to change without notice. The phasing schedule is subject to change. Square footages are approximate and are subject to change.

Heather Floorplan

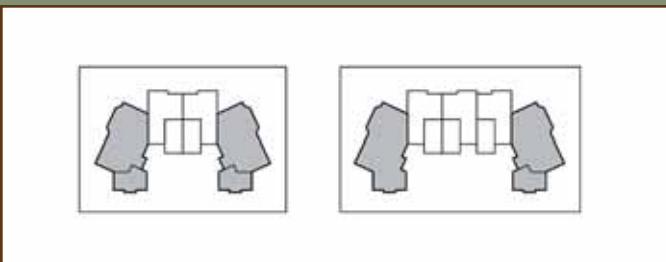
Uphill

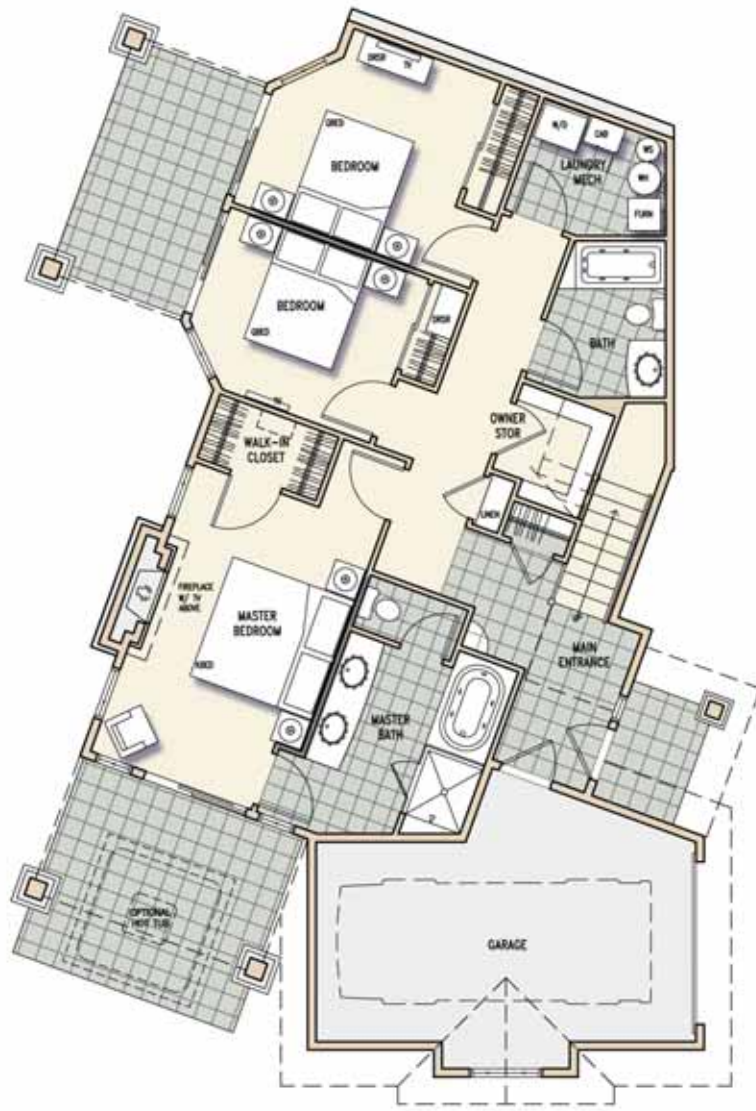
2 Levels

4 Bedrooms

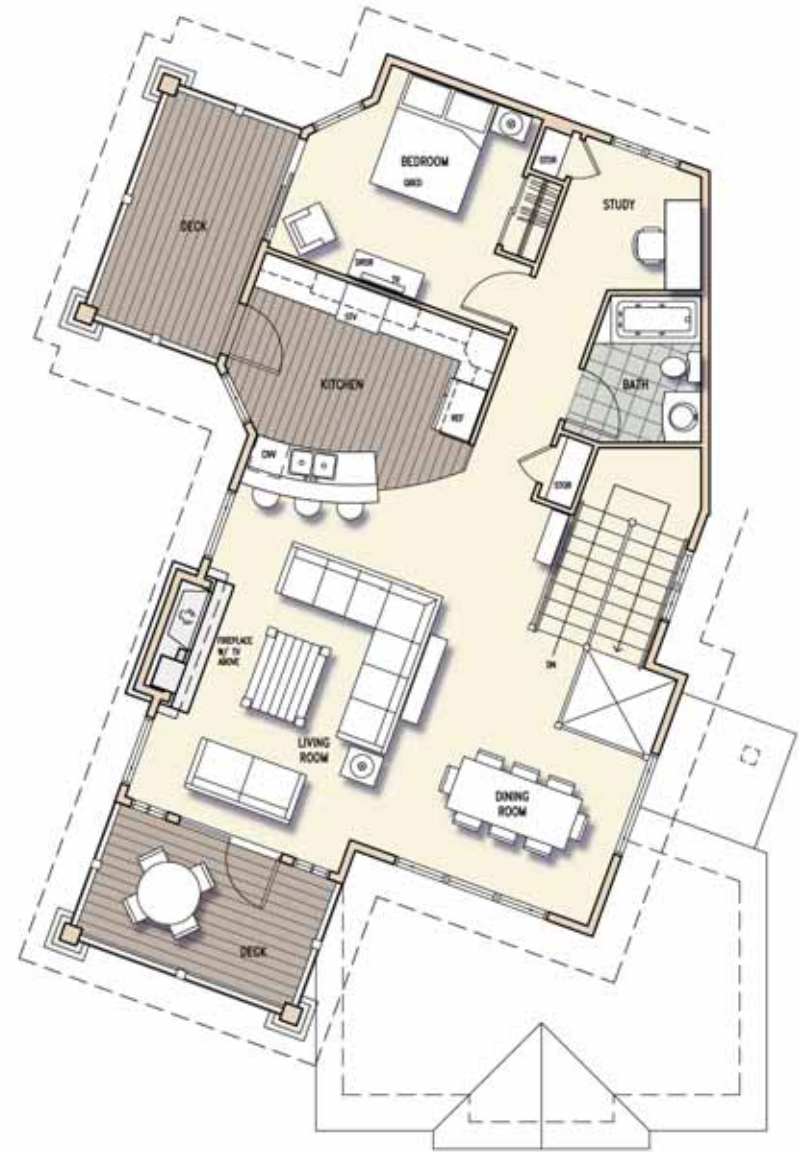
3 Bathrooms

2,140 Square Feet





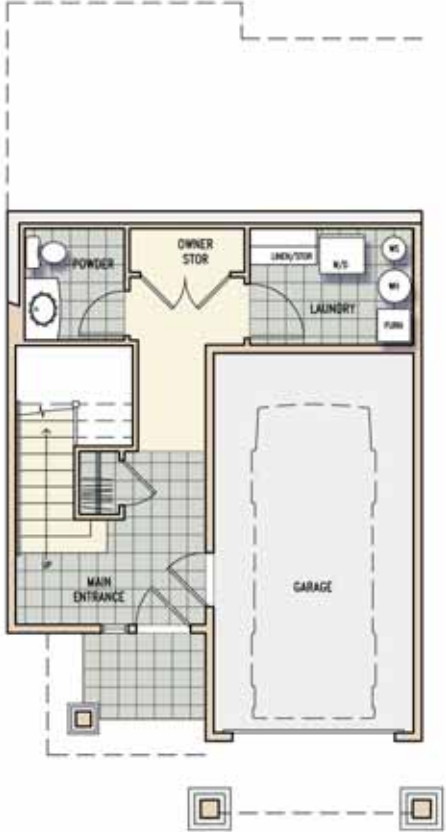
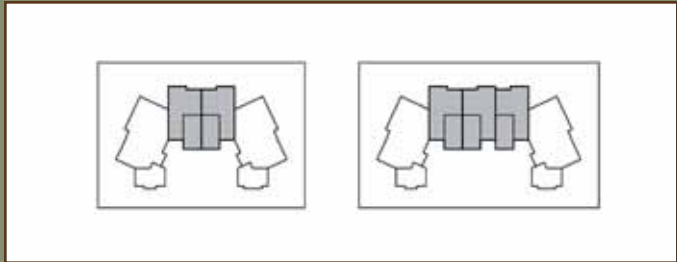
Floor Level 1



Floor Level 2

Larkspur Floorplan

- Uphill
- 3 Levels
- 3 Bedrooms
- 3 Bathrooms
- 1,930 Square Feet



Floor Level 1



Floor Level 2



Alternate Bathroom Design



Floor Level 3

Sunflower Floorplan

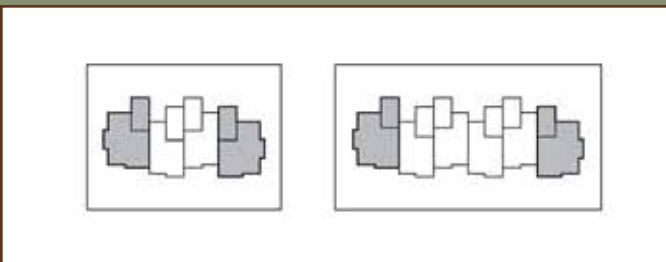
Downhill

2 Levels

2 Bedrooms + Den

3 Bathrooms

1,820 Square Feet





Floor Level 1

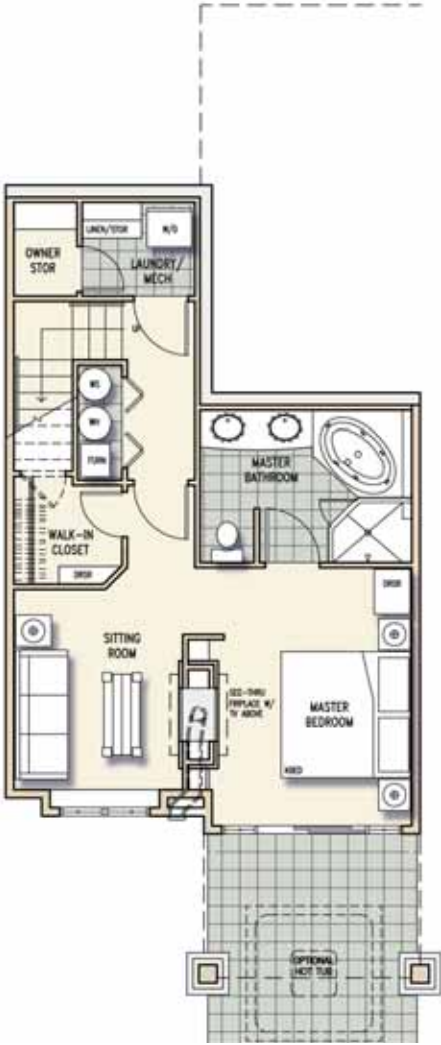
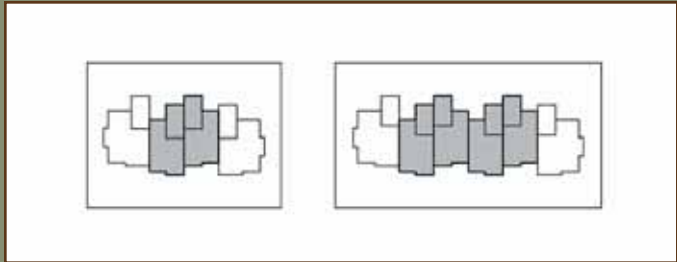


Floor Level 2

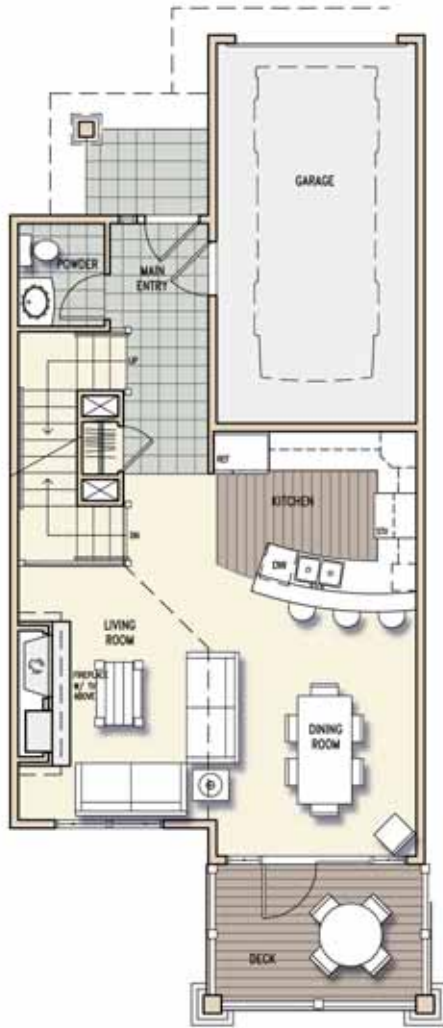
Floor plans, site plans, elevations, furnishings, finishes, materials and other design specifications are preliminary and subject to change without notice. Square footages are approximate and subject to change.

Lupine Floorplan

- Downhill
- 3 Levels
- 3 Bedrooms
- 3 Bathrooms
- 1,820 Square Feet



Floor Level 1



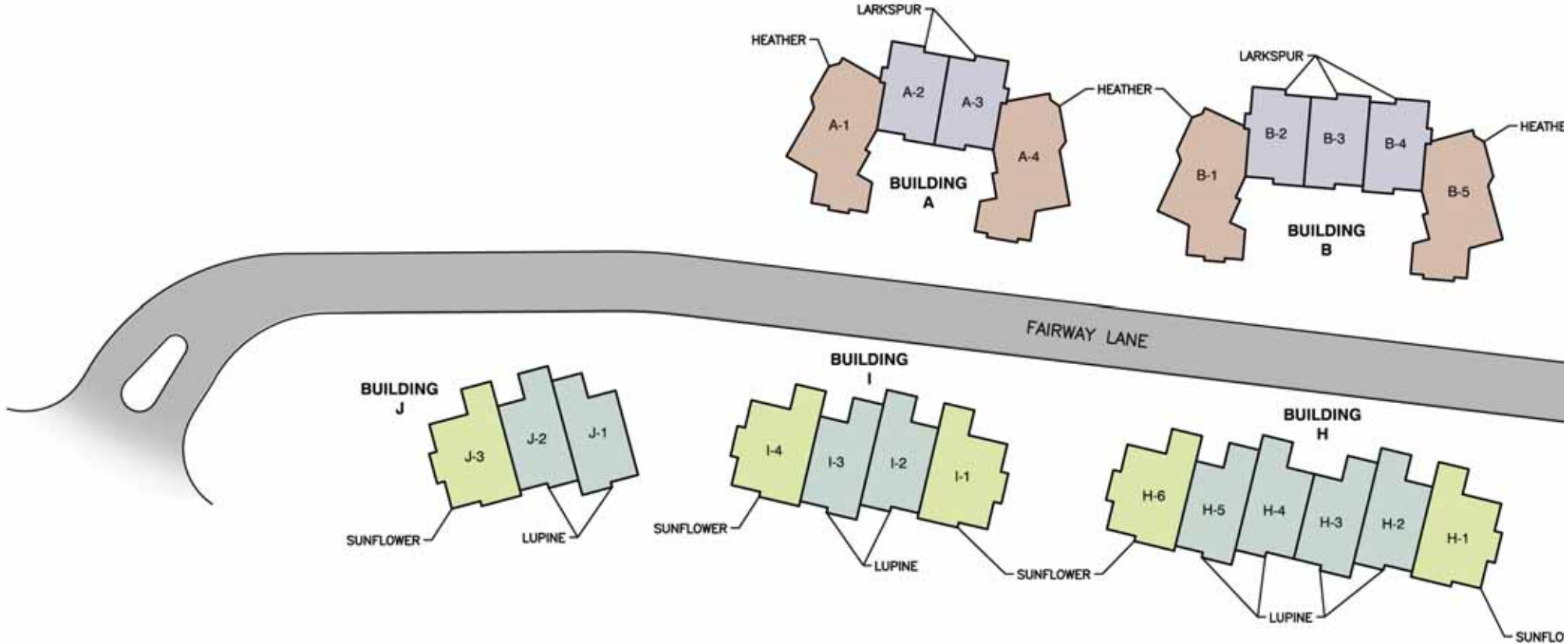
Floor Level 2



Floor Level 3

Floor plans, site plans, elevations, furnishings, finishes, materials and other design specifications are preliminary and subject to change without notice. Square footages are approximate and subject to change.

Unit Plan





HEATHER
 4 BEDROOMS
 3 BATHROOMS
 2,140 SQ. FEET

LARKSPUR
 3 BEDROOMS
 3 BATHROOMS
 1,930 SQ. FEET

SUNFLOWER
 2 BEDROOMS + DEN
 3 BATHROOMS
 1,820 SQ. FEET

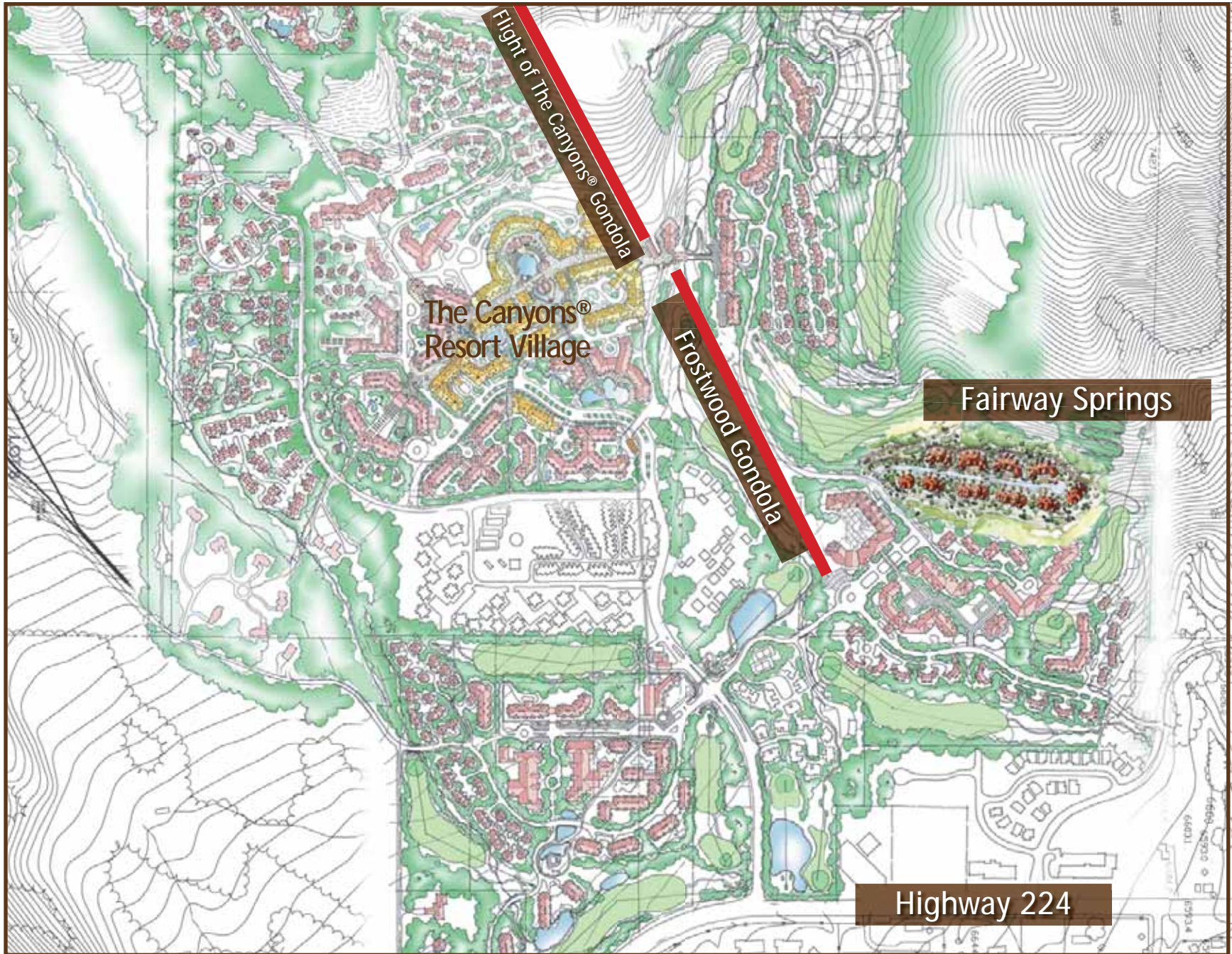
LUPINE
 3 BEDROOMS
 3 BATHROOMS
 1,820 SQ. FEET

Floor plans, site plans, elevations, furnishings, finishes, materials and other design specifications are preliminary and subject to change without notice. The phasing schedule is subject to change. Square footages are approximate and subject to change.

Flight Travel Times and Fairway Springs Local Area Map

The only resort community in North America to offer a free Ski Resort Lift Ticket when you present your airline voucher on the same day of your arrival!





The Canyons® Resort and its related names, trade names, marks and logos are owned by The Canyons and its affiliated entities. Their use herein is solely for geographical reference purposes.

The Frostwood lift and the golf course are being designed and built by others; Developer has no control over the design or construction of such facilities.

Floor plans, site plans, elevations, furnishings, finishes, materials and other design specifications are preliminary and subject to change without notice. Square footages are approximate and are subject to change.

Building Elevations



Downhill 4-plex



Downhill 6-plex

Floor plans, site plans, elevations, furnishings, finishes, materials and other design specifications are preliminary and subject to change without notice. Square footages are approximate and subject to change.



Uphill 4-plex



Uphill 5-plex

Floor plans, site plans, elevations, furnishings, finishes, materials and other design specifications are preliminary and subject to change without notice. Square footages are approximate and subject to change.

Amenities and Features



QUALITY AMENITIES

Life at Fairway Springs Ski and Golf Villas includes:

- Located at the top of Frostwood
- Located on the proposed golf course
- Walk to the new Frostwood Gondola
- Nightly rentals allowed
- Optional outdoor hot tubs in most homes
- Comfortable gathering spaces and cozy nooks
- Located on private cul-de-sac
- Walk-out patios and decks for each unit
- Located near full-service spas and restaurants
- Walk to the world-class Golden Door Spa
- Beautiful views

DESIGN SPECIFICATIONS

Interiors:

- Designer furniture packages available
- Gas fireplace with alder mantle and stone surround
- Solid wood two-panel doors
- High quality, raised-panel alder cabinets
- Custom alder baseboards and casings
- Oil-rubbed bronze door hardware
- Dining area and breakfast bar
- Slate or hardwood floors in entryway and kitchen
- Rounded corners with lightly textured wall finishes
- Spacious nine foot and vaulted ceilings
- Washer and dryer included in every unit
- Oversize windows
- French doors to deck off great room
- Timber ceiling beams

Miscellaneous Items:

- One-car garage in every unit with ski and board storage rack
- Large covered decks with expansive views
- Lockable owner storage in every unit
- Mountain-rustic exteriors with natural stone and stucco

Kitchens:

- Granite slab countertops
- Stylish raised-panel alder cabinets
- Double bowl stainless steel sink with disposal
- Hardwood or slate flooring
- Kitchen Appliances by Wolf, Sub-Zero and ASKO, or equivalent

Master Bedrooms with Five Fixture Master Baths:

- Gas fireplace
- Custom stone flooring
- Tub and shower surround with tumbled tile accents
- Oil-rubbed bronze bath fixtures
- European frameless shower enclosure with oil-rubbed bronze accents
- Granite vanity top
- Jetted tub

Guest Baths:

- Ceramic tile or stone flooring
- Granite vanity top
- Jetted tub in some guest baths

IBI Group: Specializing in Resort Architecture

Fairway Springs is proud to showcase the work of IBI Group, and its Park City design team. IBI Group is a renowned international architectural design firm that specializes in resort master planning and design. IBI has been a guiding force on a wide array of world-class ski and golf resorts across North America. IBI projects in Park City include the Escala Lodges, Sundial Lodge and the new St. Regis.

Horizon Construction Group

Horizon Construction Group, Inc. is a premier national general contractor with 24 years of experience in developing, constructing and managing residential master planned communities. Horizon's owner-focused construction and unparalleled services have consistently surpassed the expectation of their customers. The company's enviable reputation is based on a vision driven by values. Horizon is experienced in developing and constructing many types of residential and commercial buildings. Their 3,465-unit residential portfolio includes 68 projects and totals over \$285 million. Horizon has also managed 26 commercial projects totaling over \$228 million, including retail, office, hospitality, and indoor water resorts. Horizon has successfully completed 222 condo units in 9 buildings on-time and on-budget over the past 3 years.



FAIRWAY SPRINGS
SKI & GOLF VILLAS

For more information, call:
888-806-6060



Vellum Sheet





SKI & GOLF VILLAS

For more information, call:

888-806-6060